



SMITH FARMS

Hwy 101 at Reidville Road (Hwy 296)

Spartanburg County, SC

±151,339 SF








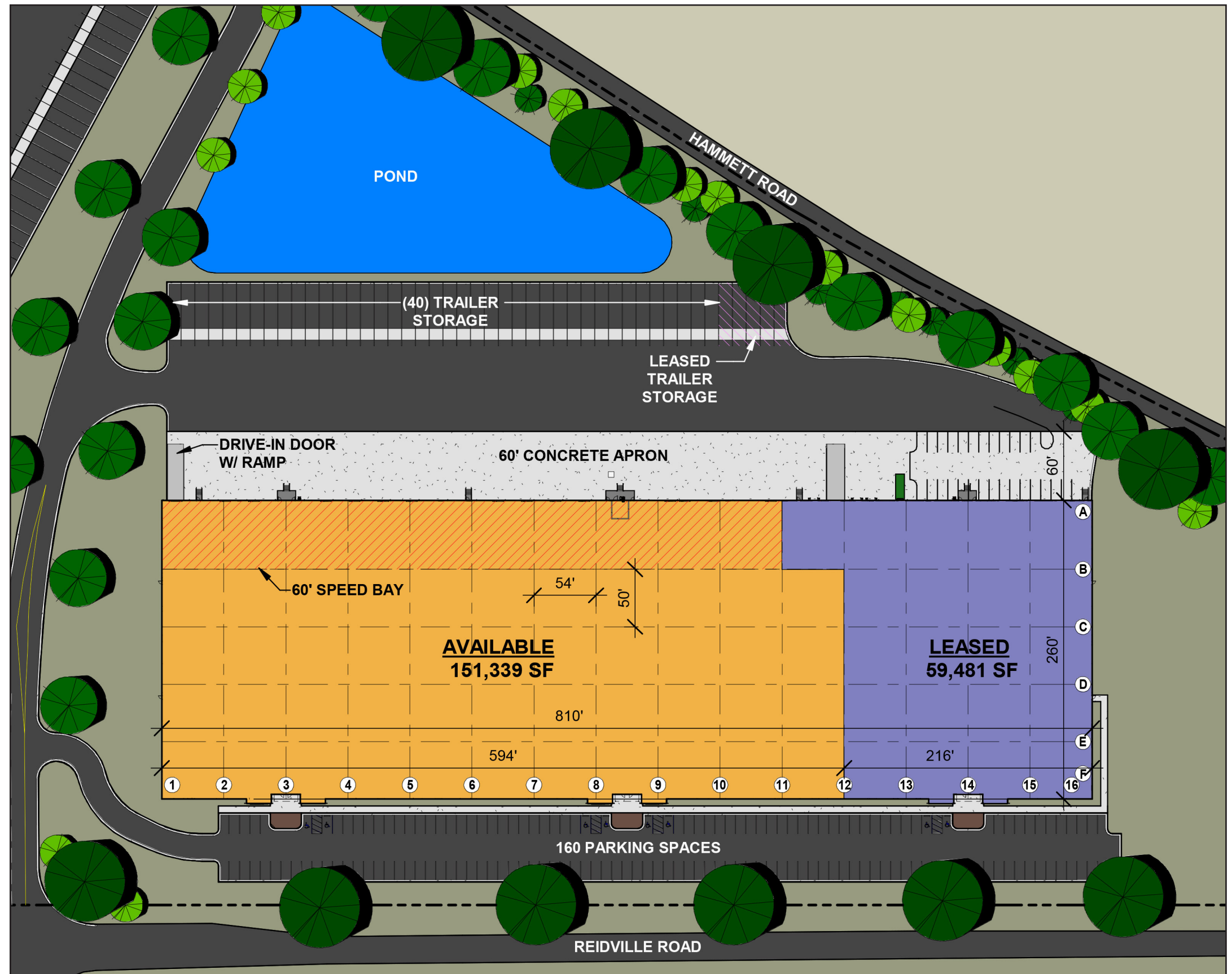
SMITH FARMS

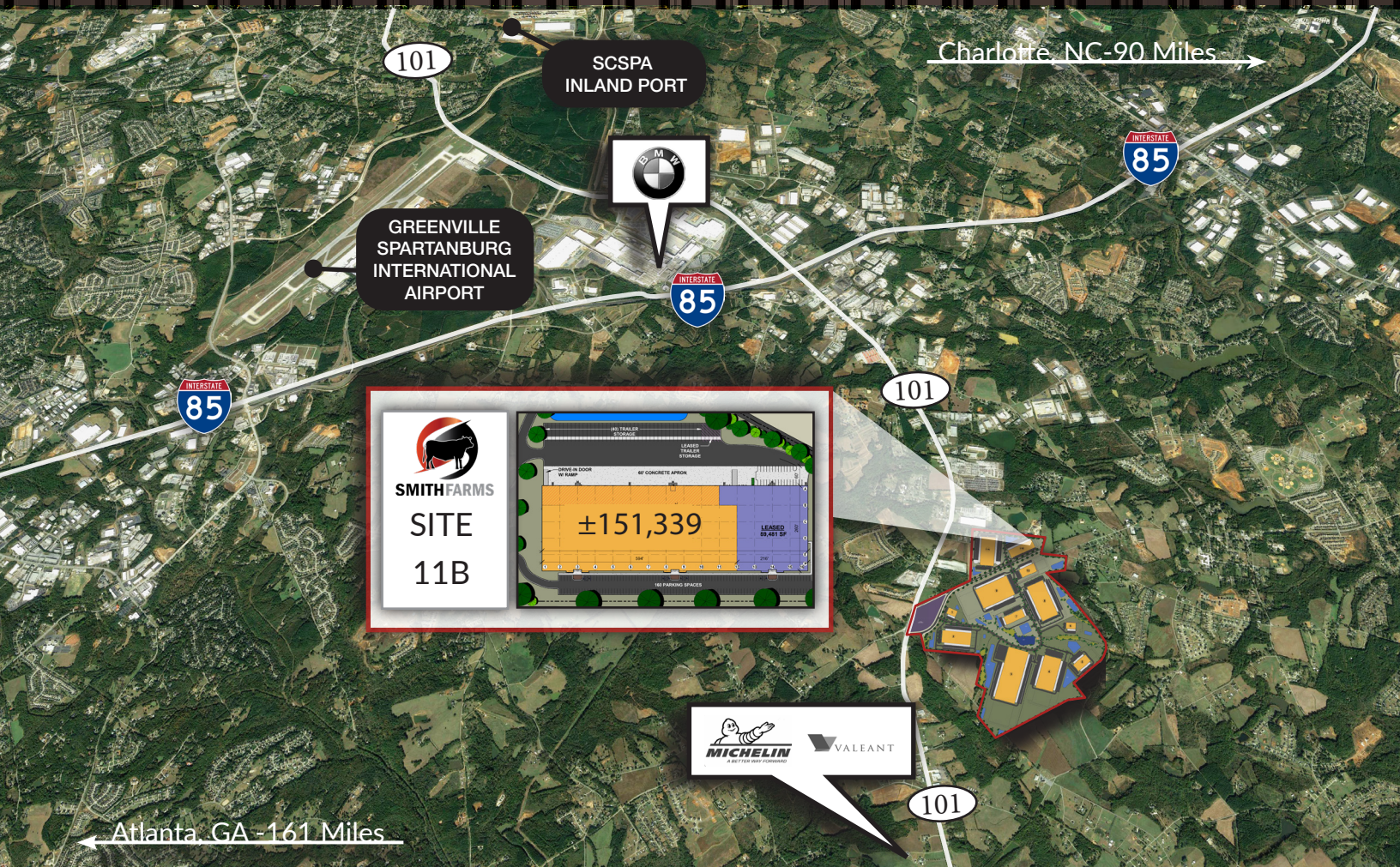
MANUFACTURING | WAREHOUSE | DISTRIBUTION



- 151,339 SF Total
- 260' x 810' Building dimensions
- 32' First bay height
- 6" 4000 psi Concrete slab over 6" GAB
- 14 Dock high doors (9'x10') with 21 knockout panels
- 1 Ramped drive-in doors (12'x14')
- 45 Mil TPO roof
- Lighting to suit
- Office-to-suit
- Clerestory windows
- ESFR sprinkler
- 160 Parking spaces
- 40 Trailer storage spaces
- 50' x 54' Column spacing (60' speed bays)
- 190' From edge of building to back of curb
- 3 Phase, 277/480 volt set up for (2) 2,000 amp services

	TRANSPORTATION	MI
	SCSPA Intermodal Facility	8.8
	FedEx Ground	10.6
	FedEx Air	8
	I-85	3
	I-26	11
	GSP International Airport	8
	Charleston Harbor (SC)	202
	Port of Savannah	239





For more information, please contact:

NAI Earle Furman

Ford Borders, SIOR
 864.270.1010
 fborders@naiearlefurman.com

Grice Hunt, SIOR
 864.678.5935
 grice@naiearlefurman.com

Clay Williams
 864.678.5938
 clay@naiearlefurman.com

RED ROCK DEVELOPMENTS

Bill Smith
 803.354.4275
 bsmith@redrockdevelopments.com

John Barker, Jr., SIOR
 704.481.5560
 jbarker@redrockdevelopments.com

Leah B. Bailey, SIOR
 704.619.3825
 lbailey@redrockdevelopments.com